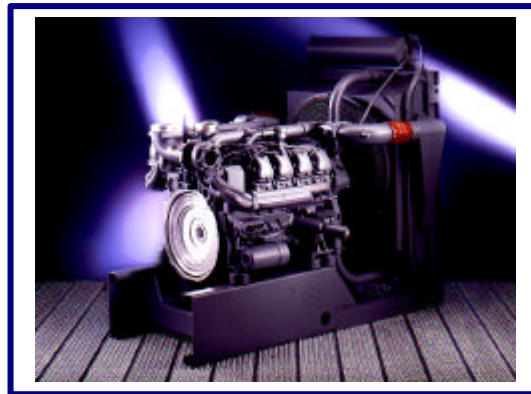


TECHKNOL POWER GENERATION



MAN Generating Set Range

General Description

This **TPG** range of MAN generating sets has been born out of a new emergence by MAN to provide the already accepted and well-known quality diesel engine with a wider and more global acceptance and a greater variety of applications. **TPG** have put together a comprehensive range of MAN powered product combining the reliability and high performance of the water-cooled diesel range. The outputs available on this range span the key areas in the power generation requirement today on a global scale and **TPG** enhance the MAN quality and reliability with their own professionally finished product.

Engine

Turbo-charged and intercooled (except 215kVA), water-cooled, multi-cylinder direct injection MAN diesel engine with electronic speed governing (all except 170 & 215kVA). All engines supplied with replaceable elements for oil, fuel and air-filter assemblies. An initial fill of high-quality, multi-grade engine oil is included together with a sump oil drain line fitted with an on/off valve.

Alternator

TPG utilise the modern technology of brushless self-exciting and self-regulating alternators. Typically, the alternators are built in accordance with BS 5000, VDE 0530, IEC 34, and NEMA regulations. We offer alternators to meet the full classification range and we adopt a technically preferred close-coupled arrangement.

Key Start Control Panel

A vibration-isolated sheet-steel panel mounted on the genset contains the following instrumentation:

- AC ammeters
- AC voltmeter and selector switch
- Dual-scale Frequency/RPM meter
- Hours-run counter
- Start/run/stop key switch with LED shutdown and status indicators for low oil pressure, high engine temperature and overspeed.
- Oil pressure/engine temperature gauges/battery-charge indicator
- Fuses, terminations, relays and transformers as appropriate
- Suitably rated moulded-case triple-pole circuit breaker.

Fuel Tank

All sets up to and including D2848 LE201 have a daily-service diesel tank, are constructed from welded steel plate, with an optional arrangement of freestanding bulk fuel storage tanks if required.

Finish & Quality Control

Manufacturers' instruction manuals for both engine and alternator, wiring diagrams, heavy-duty compressed rubber anti-vibration mounts and an industrial exhaust silencer with a one-metre flexible connector accompany each generator set on despatch.

All sets are spray-painted with a quality high-gloss finish, using enamel paint with rust inhibitors to a heavy industrial specification. The base plate is finished in black gloss. Consideration will be given to match clients' own colour scheme.

All **TPG** sets are custom-built in our own factory. Prior to despatch each machine is subjected to rigorous and comprehensive factory inspection procedures and tested under full load. Test certificates will be supplied on request.

Typical Optional Extras

- Automatic mains failure control systems
- Synchronising and load sharing
- Remote monitoring systems
- Acoustic/weather-protection enclosures
- ISO containerised sets
- Mobile trailer units





Generating Sets - MAN Engine Range

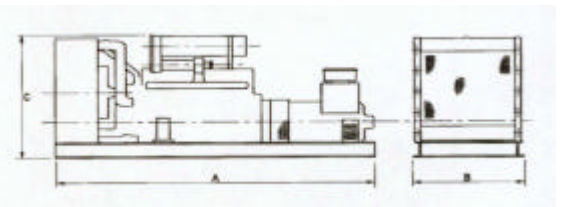
GENSET - 50 Hz at 1500 RPM					ENGINE DETAILS						APPROXIMATE DIMENSIONS				
Model	PRIME		STANDBY		Model	Type	No. of Cyls.	Arrange. of Cyls.	Cubic Capacity	Fuel Cons.	Length (A)	Width (B)	Height (C)	Gross Weight	Packed Volume
	kVA	kW	kVA	kW											
TPM250	250	200			D0836LE201	T	6	IL	11.97	45.2	2800	900	1655	1675	5.35
TPM310	310	248			D2866LE201	TI	6	IL	11.97	65.0	3100	1200	1980	2370	6.70
TPM400	400	320			D2876LE201	TI	6	IL	12.82	88.5	3080	1440	1830	2960	8.70
TPM450	450	360			D2848LE211	TI	8	V	12.82	88.5	3080	1440	1830	2960	8.70
TPM500	500	400			D2840LE201	TI	10	V	18.27	103.3	3400	1400	1830	3430	9.30
TPM635	635	508			D2842LE201	TI	12	V	21.93	126.1	4120	1640	2050	5400	15.25
TPM670	670	536			D2842LE211	TI	12	V	21.93	126.1	4120	1640	2050	5400	15.25

DEDICATED STANDBY RATED GENERATING SETS ONLY

GENSET - 50 Hz at 1500 RPM					ENGINE DETAILS						APPROXIMATE DIMENSIONS				
Model	PRIME		STANDBY		Model	Type	No. of Cyls.	Arrange. of Cyls.	Cubic Capacity	Fuel Cons.	Length (A)	Width (B)	Height (C)	Gross Weight	Packed Volume
	kVA	kW	kVA	kW											
TPM250			275	220	D0836LE203	TI	6	IL	11.97	55.8	2980	1200	1980	2260	6.35
TPM310			410	328	D2866LE203	TI	6	IL	11.97	65.0	3100	1200	1980	2370	6.70
TPM400			500	400	D2876LE203	TI	6	IL	12.82	88.5	3080	1440	1830	2960	8.70
TPM450			550	440	D2848LE213	TI	8	V	12.82	88.5	3080	1440	1830	2960	8.70
TPM500			610	488	D2840LE203	TI	10	V	18.27	103.3	3400	1400	1830	3430	9.30
TPM635			700	560	D2840LE213	TI	10	V	21.93	103.3	3400	1400	1830	3430	9.30
TPM670			810	648	D2842LE213	TI	12	V	21.93	126.1	4120	1640	2050	5400	15.25

ADDITIONAL INFORMATION

- All ratings are in accordance with ISO 8528-1 and ISO 3046, BS 5514 and DIN 6271 conditions
- All ratings are based on nominal 400/230V, 3ph, 50Hz
- Ratings are based on MAN supplied test data under NTP ambient conditions
- Fuel consumption figures are based on 100% prime ratings in accordance with MAN published data
- kVA figures are based on a power factor of 0.8
- All sets have a daily-service diesel tank constructed from welded steel plate, integral with the base frame and fitted with fill, vent, feed and return lines and a contents gauge, with an optional arrangement of freestanding bulk fuel storage tanks if required.



The information given in this leaflet is correct at the time of printing to the best of our knowledge. It is to be used as a general guideline.

TPG reserve the right to amend details and specifications without notice in line with our policy of continuous product development.



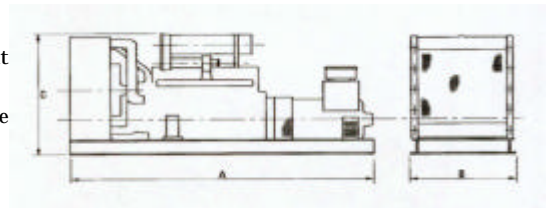
Generating Sets - MAN Engine Range

GENSET - 60 Hz at 1800 RPM					ENGINE DETAILS						APPROXIMATE DIMENSIONS				
Model	PRIME		STANDBY		Model	Type T=Turbo I=Intercooled	No. of Cyls.	Arrange. of Cyls. Inline/Vee	Cubic Capacity ltrs	Fuel Cons. ltrs/h	Length (A) mm	Width (B) mm	Height (C) mm	Gross Weight Kg	Packed Volume m3
	kVA	kW	kVA	kW											

TPM270	270	216	310	248	D0836LE201	T	6	IL	11.97	49.7	2800	900	1655	1675	5.35
TPM360	360	288	460	368	D2866LE201	TI	6	IL	11.97	71.5	3100	1200	1980	2370	6.70
TPM460	460	368	560	448	D2876LE201	TI	8	V	14.62	103.2	3080	1440	1830	2960	8.70
TPM500	500	400	600	480	D2848LE211	TI	8	V	14.62	125.1	3400	1400	1830	3430	9.30
TPM570	570	456	660	528	D2840LE201	TI	10	V	18.27	125.1	3400	1400	1830	3430	9.30
TPM700	700	560	750	600	D2842LE201	TI	12	V	21.93	149.1	4120	1640	2050	5400	15.25

ADDITIONAL INFORMATION

- 1 All ratings are in accordance with ISO 8528-1 and ISO 3046, BS 5514 and DIN 6271 conditions
- 2 All ratings are based on nominal 440/220V, 3ph, 60Hz
- 3 Ratings are based on MAN supplied test data under NTP ambient conditions
- 4 Fuel consumption figures are based on 100% prime ratings in accordance with MAN published data
- 5 kVA figures are based on a power factor of 0.8
- 6 All sets have a daily-service diesel tank constructed from welded steel plate, integral with the base frame and fitted with fill, vent, feed and return lines and a contents gauge, with an optional arrangement of freestanding bulk fuel storage tanks if required.



The information given in this leaflet is correct at the time of printing to the best of our knowledge. It is to be used as a general guideline. TPG reserve the right to amend details and specifications without notice in line with our policy of continuous product development.